



Beaufort County Public Works Stormwater Infrastructure Project Summary

Project Summary: Forest Field Subdivision - Shetland Lane Outfall

Project #: 2010-120 Completed: Mar-10

Narrative Description of Project:
Project improved 870 L.F. of drainage system. Cleaned out 265 L.F. of outfall ditch. Cleaned out 605 L.F. of outfall ditch by hand.

Material Cost, Rental Equipment Summary, and Labor

Material	Unit	Cost/Unit	Qty	Cost
Debris Disposal	ton	\$30.00	6.7	\$201.90
Excavator Rental				\$192.50
Gas	gallon	\$2.59	54.5	\$141.16
Diesel	gallon	\$2.57	34.0	\$87.38
Labor	hours		208.0	\$7,076.07
Total Cost of Materials, Rental Equip., and Labor				\$7,699.01

Note: Labor cost includes the employee's salary plus fringe benefits.

Equipment Cost

Item	Asset	Cost/Hour	Hrs.	Cost
Bobcat T300	22847	\$20.10	11.0	\$221.10
Dump Truck	23106	\$16.68	12.0	\$200.16
Pickup Trucks		\$4.17	66.0	\$275.22
Total Equipment Cost				\$696.48

Cost/hour excludes fuel cost.

Total Cost: \$8,395.49

Site Photographs

Before



During



After



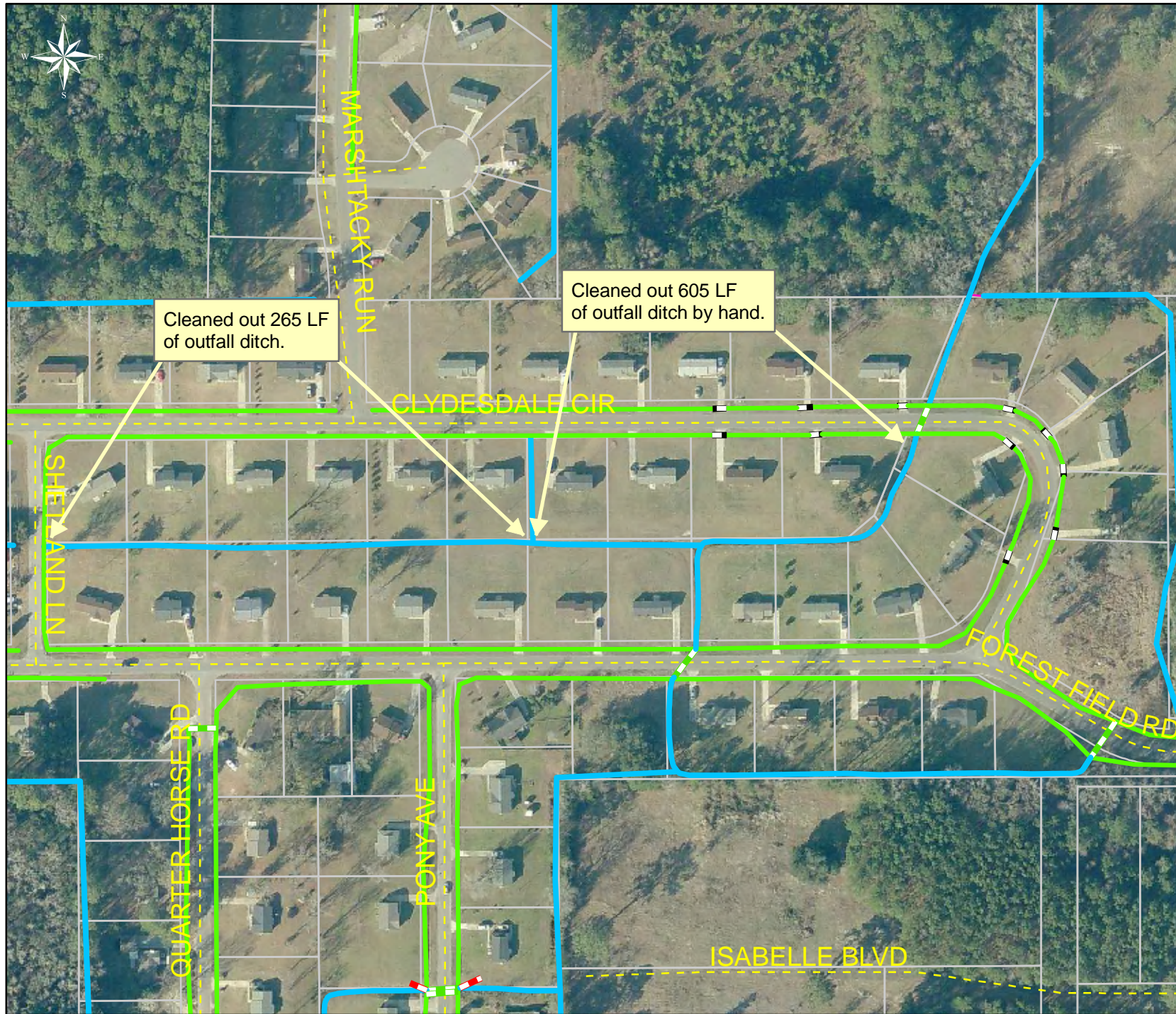
Project: Forest Field Subdivision - Shetland Lane Outfall

Activity: Drainage Maintenance

Project #: 2010-120

Township: Port Royal Island

Completed: March 2010



Legend

Drainage Type

- River
- Stream
- Outfall
- Lateral
- Roadside
- Roadside Pipe
- Crossline
- D/W
- Access
- Piped
- Bleeder
- Parcels

0 37.575 150 225 300 Feet

1 inch equals 186.89 feet

Prepared By: BC Stormwater Management Utility

Date Print: 3/2/10

File: C:\sethdata\projects\projectmaps\Forest Field SD Shetland Ln 2010-120